

Layer 3 QoS Switch

VP5208A

Ubiquoss VP5208A is a Layer 3 QoS switch that supports VLAN based routing and IP multicasting to carry out Layer3 switching and provides useful services such as IP packet filtering or DHCP.

VP5208A QoS switch classifies traffics based on various QoS traffic classification criteria and reprioritizes the processing order of classified traffics. QoS prevents transport delay by differentiating the bandwidth for packets, and data drop by defining priority for specific data of importance. In addition, VP5208A provides Web based Management that allows user to analyze the traffics, thus to utilize limited bandwidth flexibly by auto detecting/blocking abnormal traffics.

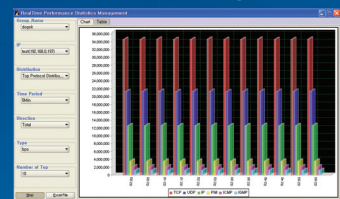
VP5208A has eight (8) 10/100base-TX(UTP) ports for downlink and 100Base-FX(SFP type) or 10/100/1000Base-TX up to two ports(combo type) for uplink. Especially the 100Base-FX optical interface supports long distance connectivity as far as 40km.

BASIC FEATURES AND PERFORMANCE

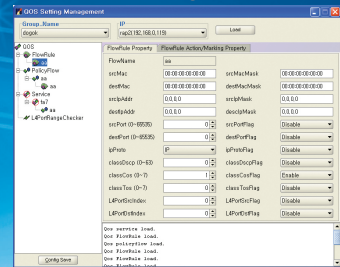
- Fixed 8 10/100Base-TX ports for downlink
- 100/1000B-FX or 10/100/1000B-Tx : 2 ports (combo type uplink)
- 5.6 Gbps Non-Blocking Switch Fabric
- 4.2 Mpps Wire Speed L2/L3 Switching/Routing
- Up to 16K MAC Address Support for L2 Switching
- Up to 128 VLANs Support
- Filtering : DHCP, NetBios, NBT, Mac, Broadcast Storm, IP Packet Filtering, IP-Subnetwork range blocking, Selective handling of specified IP address, Detection of IP address collision
- Secure Network : DoS prevention, Worm virus Filtering
- Static, Default gateway, Secondary IP
- IEEE802.1p Classification, Marking & Remarking, Rate limit, Tail Drop, SPQ, DWRR
- Rate Limit: @ 1Mbps (100M & Gigabit port)
- Egress Traffic Shaping (Rate Limit) per Port
- Ingress Traffic policing per flow/packet
- IGMP snooping, PIM-SM, Port Trunking, DHCP Relay
- TFTP, CLI, Telnet, Syslog, SNMP I/II, Agent, RMON, Port Mirroring
- QoS Reporting & Monitoring
- Web based Management for Traffic Monitoring and Qos setting
- EMS Support

EMS(Element Management System) Feature

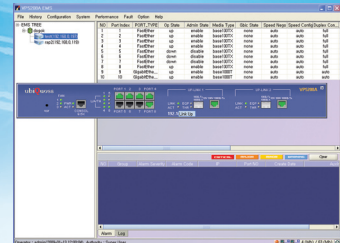
Traffic Monitoring



QoS Management



Configuration/Fault Management





Technical Specification

Hardware Specification	
System Architecture	100/1000B-FX or 10/100/1000B-Tx : 2 ports (combo type uplink) 8-fixed 10/100Base-TX interface ports
Console	RS-232C Serial port(RJ-45 type)
Memory	128MB Main Memory 16MB Boot/OS Flash Memory 1GB for traffic statistics history
Physical Dimension	19"Rack Mount 44mm(H) x 437mm(W) x 300mm(D)
Environment Conditions	
Input voltage and frequency	100~240 VAC / 50~60 Hz
Power consumption	25W
Operating temperature	0 ~ 50 °C
Storage temperature	-10 ~ 70 °C
Performance	
Switching Fabric	5.6 Gbps non-blocking
Throughput	4.2 Mpps wire-speed L2 Switching
Media Interface	
Interface Type	100/1000B-FX or 10/100/1000B-Tx : 2 ports (combo type uplink) 10/100Base-TX: 8 ports (Auto-negotiation)
Console	RS-232C Serial port (RJ-45 type, 9600bps)

Capacity	
MAC Address	Up to 16K MAC Management
VLAN	Up to 128 VLAN Private Edge VLAN, 8021.Q Tag Vlan (Max 128 Tag Vlan) Link Aggregation (802.3ad) : 13 group, Max 8 port/group
Services and Features	
Filtering, Security & QoS	IEEE 802.1p QoS, Diff-serv support Congestion Management Filtering : Mac address, Mac address Count limit, Netbios, NBT, DHCP, Broadcast Storm, Selective handling of specified IP address, IP Packet filtering, Detection of IP address collision, IP Sub-network range blocking Virus Filtering : DoS prevention, Worm virus Filtering Subscriber Traffic control by ACLs (Access Control Lists)
Bandwidth Management	Hardware-based Rate Limiting Rate Limiting : 1Mbps per Ethernet port Rate Limiting : 1Mbps per Gigabit port Egress Traffic Shaping per Port Ingress Traffic Policing per Flow/Package
Management	SNMP v1/v2, RMON, MIB-I/II Remote S/W Upgrade, Telnet, TFTP, FTP, Port Mirroring CLI, Syslog, Access level control for administrator, RADIUS, Web Management, EMS
Functions	STP(802.1D), RSTP(802.1w) DHCP relay NTP (Network Time protocol) Client Jumbo Frame packet support : 9216byte Stacking & IP Clustering : Max 8 Stacking
Multicasting Protocol	IGMP v2.0, IGMP snooping, IGMP PIM-SM



ubiquoss Inc.
24F Millennium B/D, 467-12 Dogok-dong,
Gangnam-Gu, Seoul 135-700 Korea.
Tel. +82-2-2190-3100 / Fax. +82-2-2190-3201
Web. <http://www.ubiquoss.com>
E-mail. overseas@ubiquoss.com

